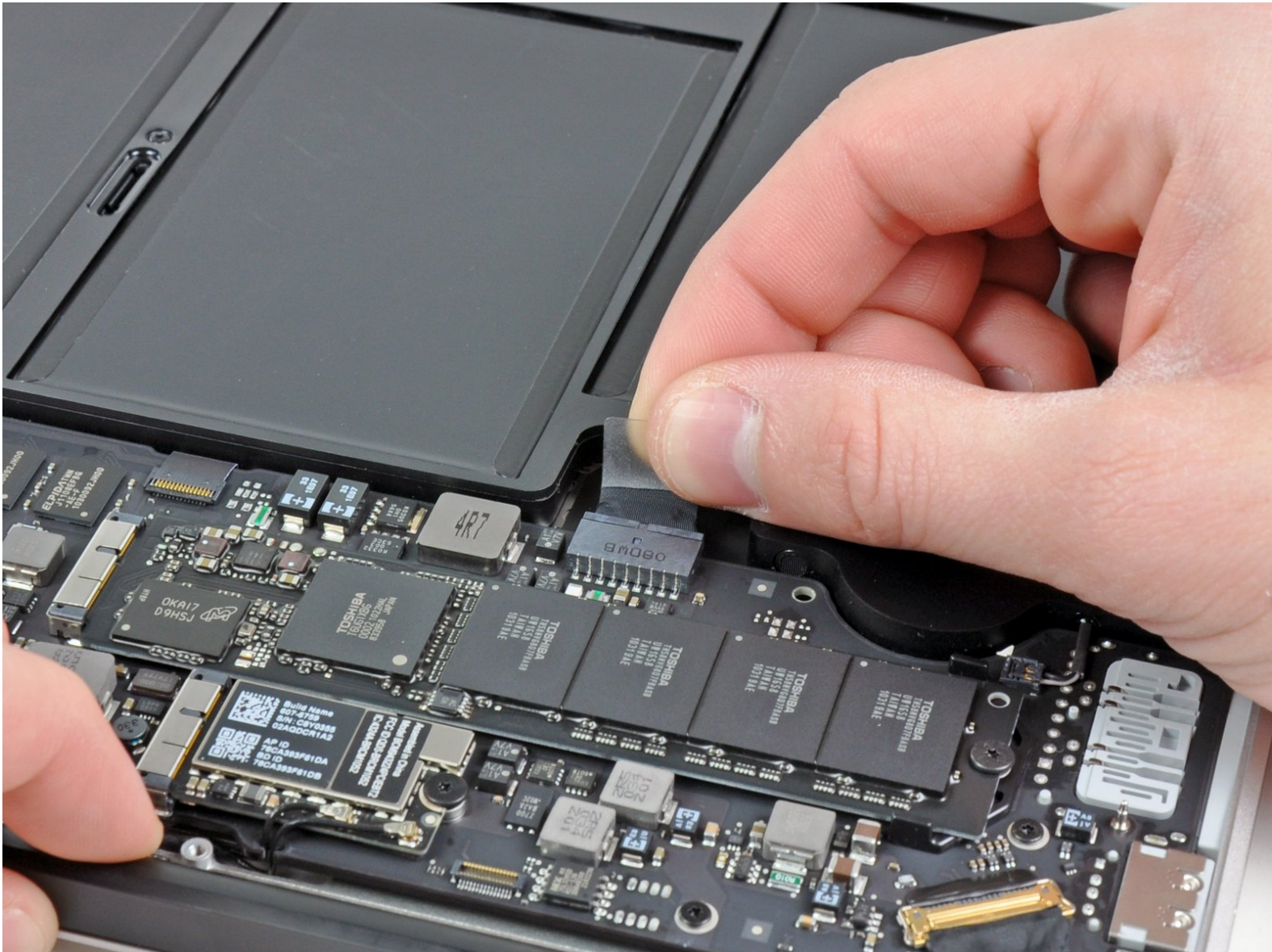




MacBook Air 13" Late 2010 Battery Replacement

Prerequisite. Disconnecting Battery.

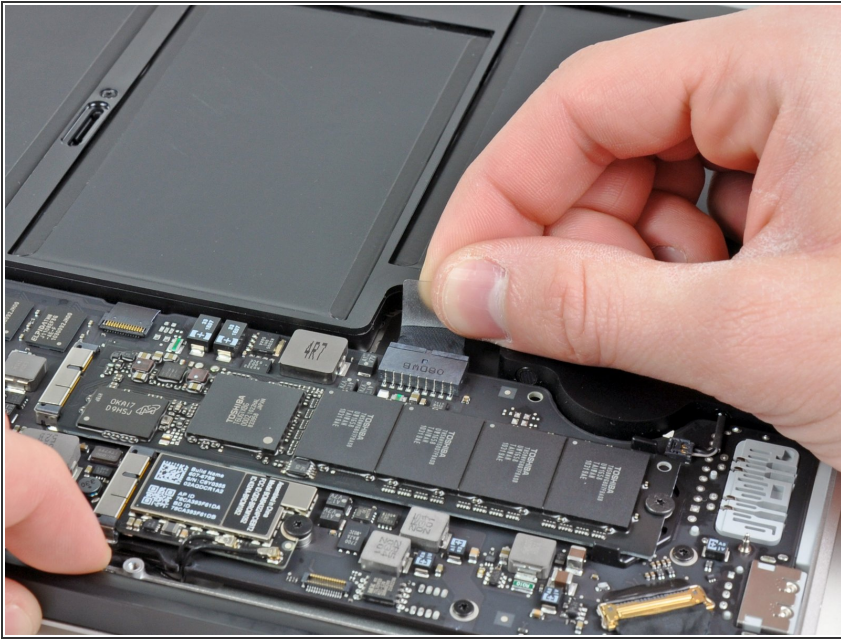
Written By: Andrew Bookholt



INTRODUCTION

Prerequisite. Disconnecting Battery.

Step 1 — Battery



- ❗ For precautionary purposes, we advise that you disconnect the battery connector from the logic board to avoid any electrical discharge. This step is **optional** and is not required.
- Grab the clear plastic pull tab attached to the battery connector and pull it toward the front edge of the Air to disconnect the battery from the logic board.
- ⚠ Do not lift upward on the connector as you disconnect it.

To reassemble your device, follow these instructions in reverse order.